

**mcafee**  
**Loughgall**



**Thursday 15th June @ 6:30pm**

# Conditions

1. The highest approved bidder shall be the purchaser. The Auctioneer reserves the right to refuse any bid, and should any dispute arise between two or more bidders, the lot or lots in dispute shall be put up again, or not, and resold at the discretion of the Auctioneer, or the auctioneer may declare the purchaser. The Auctioneer reserves the right to bid on behalf of the vendor up to and including any reserve price placed on any lot and to alter, divide, group or withdraw any lot or lots either before or at any time during the sale.
2. The Auctioneer shall regulate the bidding and no bid shall be retracted.
3. Every purchaser shall give his name and place of abode, in default of which the Auctioneers shall have the power to resell at once, or afterwards as they may think fit.
4. Each bidder shall be supposed to have seen and to be thoroughly acquainted with the contents and conditions of the lot or lots on which he may bid, and no allowance whatsoever will be made for any faults, imperfections or errors of any description. The measurements and quantities described in the Catalogue are believed to be correct and must be taken as such. The purchaser being held to have satisfied himself as to measurements and quantities and other specifications in the Catalogue before bidding, neither will the Auctioneers or the Vendors be responsible for any lot or parts of any lot after the fall of the hammer, from which time all lots purchased are at the risk of the Purchaser.
5. The Auctioneers or the Vendors do not guarantee the measurements catalogued, or the correct description, genuineness or authenticity of any lot.
6. Each purchaser shall pay the whole amount of his purchase money (Auctioneer's Commission payable by purchaser) for all lots bought by him before any lot or lots can be removed and the whole amount due from each purchaser must be absolutely paid on each day of the sale and if not paid within such time, all moneys deposited in any part payment shall be absolutely forfeited and the Auctioneers will be at liberty to resell the lot or lots or any parts thereof remaining un-removed, by Public Sale or otherwise, without giving previous notice to the purchaser and any difference or deficiencies which may arise from, such re-sale, together with all expenses attending the same shall be made good by the purchaser.
7. The lots are sold with all faults and errors of description. No allowance can be made in any case, nor will the Vendors be answerable for any deficiencies in quantities or measurements when the purchaser,

his agent, carrier or man employed by him has removed any part of his lot or lots from the premises. All lots purchased must be removed absolutely in the time specified and if not so removed may be resold by the Vendors.

8. The Purchaser shall be answerable for all damages occasioned by any injury or other lots, by the removal of lots purchased by them, or to the premises and to repair or pay damages to the owners of same before the removal of their lots from the premises. In the event of any persons interested in the premises, claiming the whole or any part of a lot before its removal there from or if in the Auctioneer's opinion, the removal of any lot will endanger or permanently damage any building, the Auctioneer may, by written notice to the purchaser of such lot delivered to him or his Agent, or sent by post to his abode or place of business last known to the Auctioneers, rescind the sale of any such lot. The purchaser shall then be repaid his purchase money but shall not have or make any other claim.
9. Such lot or lots as are not cleared away agreeably to the condition of this sale, will not only be forfeited and may be dealt with under last condition, but the purchaser shall pay every expense attending the removal of any such lot or lots, and the costs of making good any damage occasioned by such removal. No lots shall be removed until the day following the last day of sale.
10. If any dispute or difference arises about any lot, or any other subject, the same shall be settled by the Auctioneers, with the approval of the Vendors, whose determination shall be final and binding on all parties concerned.
11. The Auctioneers nor the Vendors do not accept any liability for personal injuries of any description sustained or caused by any reason whatsoever by any person while on the premises or otherwise.
12. Purchasers will pay 15% Auctioneers Commission (minimum fee £1) + VAT on the commission.



## Join us for Tea

Loughgall W.I. extend a warm invitation to you to join them for refreshments in the premises adjoining 'The Court House' when you attend the morning or afternoon viewing session.



# Loughgall, Co. Armagh

## Antiques, Paintings, Clocks, Collectibles & More

**The Old Court House, Main Street,  
Thursday 15th June @ 6.30pm**



A really nice mix of fine furnishings, paintings, clocks and collectibles including two private collections of porcelain including, Royal Winton, Austrianware, Crystal, Dux, Belleek, Ruby, Sylvac, Doulton, Crown Derby, Moorcroft, Beswick etc, lots of nice silver, silver plate, jewellery including Diamond Rings, Mirrors, Prints, Lamps, Dolls House, Rocking Horse, Old Signs.

***Viewing at Main Street, Loughgall – Sale held online at our Ballymoney Office.***

**The entire catalogue is available to view on [easyliveauctions](https://www.easyliveauction.com/mcafeeauctions/)**

**<https://www.easyliveauction.com/mcafeeauctions/>**

**A virtual tour and a short video is also available to view on [www.mcafeeauctions.com](http://www.mcafeeauctions.com)**

Viewing Wednesday 14th June 11.00 – 1.00, 2.00 – 5.00  
and 6.00 – 7.30pm

***(Note viewing is only Wednesday,  
i.e. no viewing on day of sale).***

**[easyliveAuction.com](https://www.easyliveauction.com)**

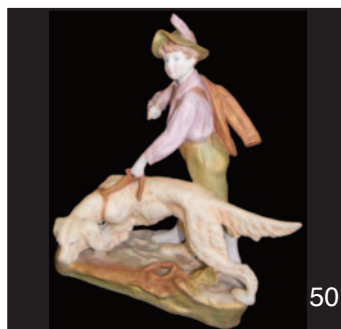


**Telephone Number During Viewing & Sale  
(028) 2766 7669 / 07860474956**





- 1 A Leeds Pottery Creamware Jug and Basin
- 2 An Italian Inlaid Lamp Table
- 3 A Victorian Walnut Davenport
- 4 A Very Nice Matching Three Piece Vase Set
- 5 A Fine Watercolour 'Belfast Children Playing' - Jim McDonald
- 6 A Watercolour 'Bluebells at Belisle' - Miles Gaythwaite
- 7 An Oil Painting 'Landscape' - David Hawkey
- 8 A Pair of Japanese Imari Vases
- 8a A Pair of Japanese Imari Vases
- 9 A Bisque Figurine Group Lady Beside Gent on Horse Back
- 10 A Very Nice Three Shelf Display Unit
- 11 A Pair of German Bisque Figurines Man and Woman Standing Beside Horses
- 12 A Pair of Antique Bisque Figurines - Bases formed as posy Holders
- 13 A Belleek Vase, Princess Pattern
- 14 A Pastal Drawing 'The Gleaners'
- 15 A Watercolour 'Land and Seascape' - Miles Gaythwaite
- 16 Three Silver Mounted and Horn Handled Ebonised Walking Sticks
- 17 A Shooting Stick
- 18 A Silver Mounted Walking Stick
- 19 Three Silver Mounted and Horn Handled Malacca Walking Sticks
- 20 A Pair of Antique Newspaper Grippers
- 21 A Pitched Pine Stick Stand
- 22 A Carved Mahogany Armchair
- 23 A Pierre Vandel Console Table
- 24 A 19th Century Mahogany Tea Caddy
- 25 A Vienna Double Weight Wall Clock by Gustav Becker
- 26 A Pair of Tall Antique Bisque Figurines
- 27 A 19th Century Rosewood Tea Caddy inlaid with Mother of Pearl
- 28 A 19th Century Architectural Slate Mantle Clock
- 29 Two Commemorative Plates 'Life of The Queen Mother' and '80th Birthday of Queen Elizabeth II'
- 30 An Empire Style Overmantle
- 31 A 1930's Handpainted Glass Cocktail Shaker and Five Glasses
- 32 A Georgian Inlaid Mahogany Wheel Barometer by Ronchetti of London
- 33 A Large Doulton Stoneware Vase
- 34 An Oriental Dressing Mirror with Mother of Pearl inlay
- 35 A Dutch Style Bureau
- 36 A Very Good Rocking Horse on Stand
- 37 A Print 'Muckish Mountain from Glock' - J H Craig
- 38 An Inlaid Walnut Art Deco Barometer
- 39 A French Salon Chair
- 40 A Paul Henry Print 'A Showery Day in Kerry'
- 41 An Ironstone Blue and White Jug and Basin
- 42 A Tall Pitch Pine Table Lamp and Shade
- 43 Two Border Fine Art Figurines 'Duck with Frog' and 'Otter'
- 44 An Inlaid Mahogany Corner Chair
- 45 A Watercolour 'Safely Gathered In' - Miles Gaythwaite
- 46 An Oil Painting 'Sheltered Spot' - Miles Gaythwaite
- 47 A Border Fine Art Figurine 'Squirrel Family'
- 48 Six Caithness Glass Paperweights
- 49 A Bamboo Framed Wall Mirror
- 50 A Very Nice Dux Figurine 'Man and Dog'
- 51 A Large Pottery Circular Dish with a Cat Design
- 52 A Bow Fronted Side Table
- 53 A Watercolour 'Down Valley' - J Watson
- 54 A Limited Edition Print 'All Set' - Caroline Cook
- 55 A 19th Century Mahogany Firescreen
- 56 A Teviodale Figurine of a Donkey
- 57 A Border Fine Art Figurine 'Seated Fox'
- 58 A Georgian Style Mahogany Tripod Table
- 59 A 19th Century Minton Large Trefoil Dish, Circa 1858
- 60 A Chesterfield Style Settee
- 61 A Nice Pair of Ruby Vases
- 62 A Lot of Three Ruby Jugs
- 63 A Lot of Six Waterford Crsytal Glasses and a Waterford Crystal Decanter
- 64 A Royal Doulton Figurine 'Dancing Years'



- 65 A Coalport Figurine 'Hayley
- 66 A Lot of Very Early Pewter Plates
- 67 A Painted Threefold Screen
- 68 A Vintage Set of Building Blocks
- 69 A Border Fine Art Figurine 'Baby Squirrel and Blue Tit'
- 70 A Pair of Large Moorcroft Table Lamps and Shades, Orchid Pattern
- 71 An Italian Jardinere on Stand
- 72 A Very Nice Decorated and Gilted Jug
- 73 A Very Nice Decorated and Gilted Jug
- 74 Two Crystal Mantle Clocks
- 75 A Victorian Brass Bound Ladies Vanity Case
- 76 A Mahogany Three Door Sideboard
- 77 A Swarovski Double Candle Stand
- 78 A Circular Oak Tobacco Box
- 79 Two Nice Old Albums, Old Receipts and Belfast Bank Cheques
- 80 A Very Fine Set of Three Beswick Pheasant Figurines
- 81 A Modern Window Lantern
- 82 Four Pieces of Flower Encrusted Belleek
- 83 A Border Fine Art Figurine 'Kingfisher'
- 84 A Russell Willis Bird Sculpture 'Kestral'
- 85 A Russell Willis Bird Sculpture 'Little Owl'
- 86 A Very Nice Pair of English Pottery Two Handled Plates
- 87 A Silvered Marble Topped Console Table
- 88 A Nice Three Sectional Dish
- 89 A Nice Pair of English Pottery Decorative Vases
- 90 A Pair of 20th Century Chinese Table Lamps and Shades
- 91 A Pair of Mahogany Wall Brackets
- 92 A Victorian Brass Oil Lamp and Shade
- 93 A Carved Olive Wood Figurine of David
- 94 A Large Glass Topped Brass Coffee Table
- 95 A Mahogany Three Tier Whatnot
- 96 An Art Deco Style Bronze and Glass Pot Pourri
- 97 A Coalport Figurine 'Elizabeth'
- 98 A Royal Doulton Figurine 'Silks and Ribbons'
- 99 Two Good Ruby Jugs
- 100 A Tapestry Polescreen
- 101 An Oil Painting 'Walking along the Lagan' - Yvonne Murphy
- 102 An Oil Painting 'Winter Morning' - W J Cunningham
- 103 A Malica Dish and a Burleighware Jug
- 104 A Nice Old Ducal Comport
- 105 An Oil Painting 'Granda's' - Miles Gaythwaite
- 106 A Very Nice Set of Brass Scales and Weights
- 107 A Mahogany Folding Nest of two Tables
- 108 A Nice Upholstered Ladies Chair
- 109 A Victorian Walnut Davenport
- 110 A 19th Century Rosewood Nursing Chair
- 111 A 19th Century Mahogany Wingbacked Occasional Chair
- 112 An Oil Painting 'Riverside Living' - Wendy Reeves
- 113 A Lladro Figurine 'Architect'
- 114 A 19th Century Walnut Nursing Chair
- 115 An Antique Mahogany Bureau
- 116 A Pair of 2nd Period Belleek Jugs
- 117 A Nice Lot of Two Oval Decorated Staffordshire Plates
- 118 An Oil Painting 'The Old Bridge' - David Harkey
- 119 A Nice Oval Two Handled Decorative Bowl
- 120 An Inlaid Mahogany Cocktail Cabinet
- 121 A Nice Handpainted and Decorated Jug
- 122 A Nice Handpainted and Decorated Jug
- 123 A Nice Rosewood Nursing Chair
- 124 Two Beatrix Potter Figurines, 'Foxy Whiskered Gentleman' and 'Jeremy Fisher'
- 125 A Gilted Occasional Table with Marble Top
- 126 A Large Modern Table Lamp and Shade
- 127 A Royal Doulton Teapot 'Under the Greenwood Tree'
- 128 A Portuguese Vista Alegre Hand Painted Ice Bucket
- 129 A Queen Victoria Diamond Jubilee Plate
- 130 A Chinese Hardwood Opium Table
- 131 A Musical Jug, 'I Love a Lassie'





53



54



60



71



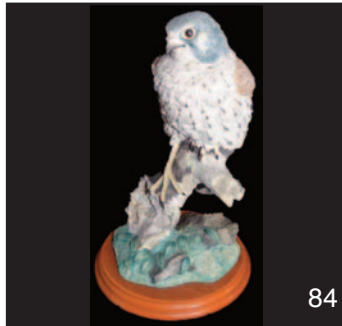
72



76



80



84



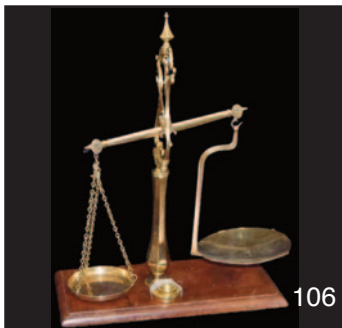
87



95



105



106



109



113



114



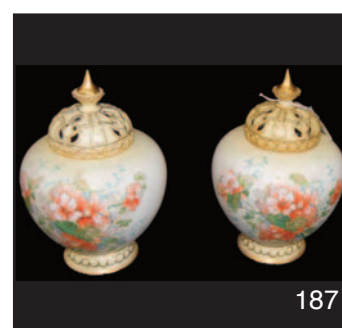
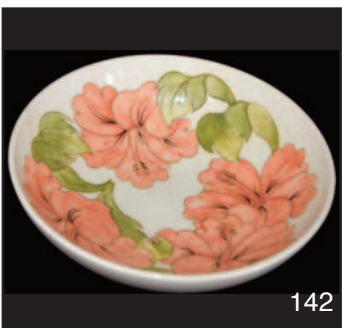
119



115

- 132 A Musical Tankard, John Peel
- 133 A Doulton Hand Painted Jug and Basin
- 134 A Chinese Laquered Trunk
- 135 A Nice Set of Six Victorian Balloon Backed Dining Room Chairs
- 136 A Large Fender Stool with Swab Cushion Seat
- 137 An Inlaid Mahogany Sutherland Table
- 138 An Inlaid Mahogany Armchair, Tapestry Seat
- 139 An Oak Floor Standing Cheval Mirror
- 140 A Caverswall Plate, Romany Pattern
- 141 A Paul Henry Print 'The Blue Hills of Connemara'
- 142 A Nice Large Circular Moorcroft Bowl
- 143 A Nice Book 'Elf on the Shelf'
- 144 A Nice Decorative Oval Figurine Bowl
- 145 A Mahogany Chippendale Style Two Door Display Cabinet
- 146 A Tyrone Crystal Table Lamp
- 147 A Watercolour 'Western-Ross, Scotland' - Ron Green
- 148 A 19th Century French Flower Encrusted Basket
- 149 A Pair of Hand Painted Baskets by Samson Paris
- 150 A Herend Lidded Bowl in Apponyi Green
- 151 A Royal Worcester Posy Holder, Circa 1914
- 152 A Royal Worcester Cup and Saucer, circa 1904
- 153 A Royal Worcester Jug, Circa 1909
- 154 A Royal Worcester Wall Pocket
- 155 A Royal Worcester Vase, Circa 1904
- 156 A Nice Decorative Small Jug
- 157 A Hand Painted Cauldron China Inkstand
- 158 A Lot of Indian Brass and Copper
- 159 Three Teriotdale Hand Painted Animal Studies
- 160 A Chippendale Style Mahogany Display Cabinet
- 161 A Royal Crown Derby Duck Paperweight
- 162 A Royal Crown Derby Cigar Pattern Cup and Saucer
- 163 A Large Royal Crown Derby Cigar Pattern Bowl
- 164 A Royal Doulton Figurine 'Cobbler'
- 165 A Royal Doulton Figurine 'The Mask Seller'
- 166 A Capodimonte Figurine 'Cortese'
- 167 A Lot of Twelve Assorted Royal Doulton Character Jugs, Assorted Sizes
- 168 A Lot of Six Waterford Crystal Brandy Glasses
- 169 A Lot of Six Victorian Ashettes
- 170 A Doulton Dinner Service, Forsythe Pattern
- 171 A Victorian Oil Lamp Turquoise Glass Reservoir
- 172 A Victorian Oil Lamp, Pint Glass Reservoir
- 173 A Victorian Oil Lamp Reservoir with With Silver Plated Double Burner
- 174 A Mahogany Bedroom Chair
- 175 A Chinese 20th Century Hand Painted Porcelain Table Lamp and Shade
- 176 A Nice Frosted Glass Ruby Jug
- 177 A Nice Pair of Ruby Vases
- 178 A Nice Pair of Sailing Prints
- 179 A Heavy Figurine 'Girl Under Umbrella'
- 180 Three Hand Painted Nautilus Plates
- 181 A Royal Copenhagen Dog Figurine
- 182 A Royal Worcester Small Decorated Vase
- 183 A Early Carltonware Hand Painted Dish
- 184 A Royal Worcester Cabinet Cup and Saucer
- 185 A Unusual Royal Worcester Small Decorative Vase
- 186 A Royal Worcester Figurine Candle Snuffer
- 187 A Very Nice Pair of Royal Vienna Lidded Pot Pourri Jars
- 188 A Very Nice Pair of Lidded Royal Worcester 'Golden Boquet' Vases
- 189 A Very Nice Pair of Royal Worcester Decorated Baskets
- 190 A Victorian Painted Glass Oil Lamp Shade
- 191 A Very Nice G.Vallon Decorated Bowl and a Similar Signed Bird
- 192 A Very Nice 2nd Period Belleek Lidded Bowl
- 193 A Beswick 'Piebald' Pony
- 194 A Very Nice Okra Studio Vase
- 195 Thirty Pieces of Goss Souvenir China
- 196 A Bamboo Framed Side Chair
- 197 A Large Turkey Ashette a/f





- 198 A Watercolour 'Over the Hill' - Robert Mee
- 199 A Empire Style Marble Topped Coffee Table
- 200 A Victorian Walnut Davenport
- 201 A Large 19th Century Japanese Imari Charger
- 202 A Victorian Brass Wall Mirror
- 203 A Pair of Large Chinese Hand Painted Ginger Jars
- 204 A Nice Shaped Inlaid Mahogany Small table
- 205 An Inlaid Mahogany Display Cabinet
- 206 Two 19th Century Ridgways Jetware Jugs
- 207 A Hand Painted Crown Devon Musical Tankard, Stirling Castle & Tarbert
- 208 A Nice Pair of Burleighware Jugs
- 209 A Large Ridgways Jetware Two Handled Vase
- 210 A Large Leather Button Backed Wing Armchair
- 211 Six Border Fine Art Animal Studies
- 212 A Wooden Decorated Dish and a Wooden Decorated Bowl 'Birds'
- 213 Two Nice Ruby and Silver Plated Bowls
- 214 A Lladro Figurine 'Girl with Goose'
- 215 A Royal Copenhagen Figurine 'Girl Holding Puppy'
- 216 A Royal Copenhagen Figurine 'Girl with Goose'
- 217 An Art Deco Style Figure by Victoria Bourne for Peggy Davis
- 218 A Royal Copenhagen Figure 'Girl Kneeling'
- 219 A Nice Pair of Coloured Glass Vases and a Similar Vase
- 220 A Ruby Vase and a Ruby Bowl
- 221 A Sundry Lot of a Dog Figurine, Planters etc
- 222 Two Sets of Four Crystal Champagne Glasses
- 223 An Inlaid Mahogany Kidney Shaped Tray
- 224 A Large Pair of Crown Devon Two Handled Vases
- 225 A Victorian Mahogany Pembroke Table
- 226 An Antique Map of Scotland
- 227 A Early Framed Print of a Car
- 228 An Oil Oainting 'Lakescene'
- 229 A Watercolour 'Friends' - Shirley Haffey
- 230 An Oil Painting 'Homestead' - Colin Turner
- 231 A Pair of 19th Century German Porcelain Ewers
- 232 A Nice Tuscan China Teaset
- 233 A Lot of Egyptian Pictures
- 234 A Pair of Adam Style Mahogany Armchairs
- 235 A Carved Mahogany Standard Lamp
- 236 A Pair of 19th Century Rosewood Framed Racing Prints 'Epson Winners, Daniel O'Rourke 1852, Wild Dayrell 1855 84cm wide and 69 high
- 237 A Cased Set of 12 Silver Plated Apostle Teaspoons
- 238 A Set of Opera Glasses
- 239 An Ostrich Egg, Pained with African Wild Animals with a Carved Wooden base
- 240 A 19th Century Inlaid Walnut Credenza
- 241 A Very Nice Pair of Austrian Hand Painted and Decorated Jugs
- 242 A Masons Ironstone 'Applique' Vase
- 243 An Antque Inlaid Mahogany Barometer by V Bianchi of Belfast
- 244 A Nice Cabinet Cup, Saucer and Other Ceramics
- 245 A Mahogany Cased Barograph
- 246 A Ruby Jug and Four Stemmed Ruby Glasses
- 247 A Figurine Based Table Lamp and Shade
- 248 A Lot of Three Ruby Jugs
- 249 A Noritake Jug and a Similar Coffee Pot
- 250 A Victorian Mahogany Hallway Mirror
- 251 Two Nice Old Tea Pots and a Lidded Tureen
- 252 A Vintage 26 Piece Teaset
- 253 Three Nice 'Shorter & Sons' Jugs
- 254 A Ruby Jug and Four Ruby Stemmed Glasses
- 255 Two Old Teapots etc
- 256 A Pair of Nice Old Decorated Plates
- 257 A Ruby Jug, Vase and Bowl
- 258 Two Nice Ruby Decorated Bowls on Silver Plated Stands
- 259 Three Cut Throat Razors
- 260 A Vienna Wall Clock





200



205



210



224



223



226



228



230



231



234



239



240



241



245



250



267



265



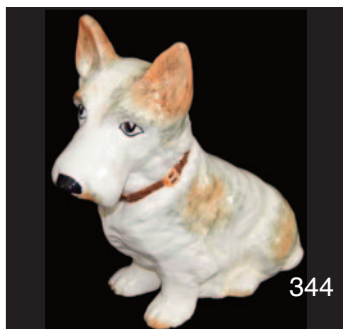
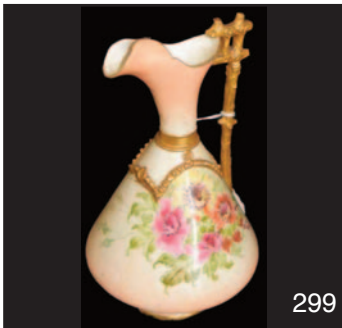
270



271

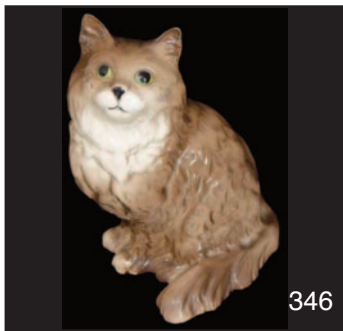


- 261 Two Crystal Decanters and Two Small Jugs
- 262 A Nice Limoges Plate and Another Nice Plate
- 263 Two Nice Burleighware Jugs
- 264 A Nice Pair of Ruby Vases
- 265 A Bridgcraft Bow Front Sideboard
- 266 A Japanese Porcelain Coffee Set
- 267 An Unusual Arthurwood Figurine Handled Jug and a Nice Burleighware Jug
- 268 A Studio Glass Bowl Signed Webb
- 269 A Mahogany Revolving Occasional Table
- 270 A Large Circular Moorcroft Plate
- 271 A Walter Moorcroft Vase, Orchid Pattern
- 272 Two Pieces of Bristol Blue Glass
- 273 A Royal Worcester Decorated Plate
- 274 A Very Nice Pair of Decorated and Handpainted Austrian Vases
- 275 A Royal Crown Derby Figurine 'Blue Tit and Chicks'
- 276 A 1920's Mahogany Snap Top Table
- 277 A Beswick Figurine of a Labrador Dog
- 278 A Very Nice Hand Painted and Decorated Oval Vase
- 279 A Very Nice Hand Painted And Decorated Tall Vase
- 280 A Large Sylvac Dog
- 281 A Large Figurine Handled Jug
- 282 An Inlaid Oval Coffee Table
- 283 A Ruby Jug and A Ruby Bell
- 284 An Inlaid Nest of Three Tables
- 285 A Crown Bone China Teaset
- 286 An Inlaid Mahogany Side Chair
- 287 An Inlaid Serpentine Fronted Three Drawer Chest
- 288 A Nice Pink Glass Finger Lamp
- 289 A Very Nice Pair of Hand Painted and Decorated Two Handled Jugs
- 290 A Nice Handpainted and Decorated Shell Plate
- 291 A Walnut Circular Footstool with Beadwork Cover
- 292 A Victorian Mahogany Polescreen with Needlework Panel
- 293 An Aneroid Barometer
- 294 A Good Office Chair
- 295 A Mahogany Chippendale Style Sideboard
- 296 A Victorian Oval Porcelain Plaque, Cupids with doves
- 297 A Royal Copenhagen Framed Plaque
- 298 A Pair of 19th Century Pedestal Glass Salts
- 299 A Nice Hand Painted and Decorated Jug
- 300 A Royal Worcester Hand Painted and Decorated Vase
- 301 A Royal Worcester Handpainted Decorated Jug
- 302 A Royal Worcester Hand Painted and Decorated Jug
- 303 A Nice Hand Painted and Decorated Jug
- 304 A Ruby Bowl Oil Lamp and an Etched Glass Shade
- 305 A Ruby Bowl Oil Lamp and Etched Glass Shade
- 306 A Nice Pair of Early Staffordshire Figurines
- 307 A 19th Century Gilt Mirror
- 308 A Very Nice Pair of Mirror Backed Wall Brackets
- 309 A Pair of Staffordshire Dogs
- 310 A Georgian Mahogany Chest on Chest
- 311 A Nice Pair of Two Handled Decorated Vases
- 312 A 1920's Chinese Lacquer Glove Box
- 313 A Maling Two Handled Dish
- 314 A 19th Century Silver Plated and Carved Coconut Condiment Set
- 315 A Regency Mahogany Pembroke Table
- 316 A Bohemian Glass Decanter and Six Glasses with Gilt Decoration
- 317 A Victorian Copper Two Handled Mug by Askew of Nottingham
- 318 A Pair of Wooden Candlesticks
- 319 Two Early 19th Century Spode Plates, one a/f
- 320 A Signed Cherrywood Plaque with Hand Painted Peacock Decoration
- 321 A Nice Shaped Side Decorated Coffee Table
- 322 A Large Studio Pottery Dish
- 323 A Set of Six Closioinne Napkin Rings
- 324 Two Royal Doulton Character Jugs, 'Henry VIII' and 'Anne Bolynn'
- 325 Two Royal Doulton Character Jugs, 'Punch & Judy' and 'Katherine of Aragon'



- 326 A Pair of Beswick ' Bird' Figruines
- 327 A Pair of Antimony Ware  
Candlesticks and a Tray
- 328 A Pair of Bretby Pottery Large Table  
Lamps
- 329 Three Pieces of Aynsley Orchard  
Gold
- 330 A Nice Mahogany Shaped Front Hall /  
Side Table
- 331 A Painted Lyre Back Chair
- 332 A Nice Bontempi Accordion
- 333 A Collection of 10 Pieces of Blue and  
White Ware
- 334 Three Antique Books
- 335 A Very Good 'Players Please' Sign  
and it's Original Hanging Bracket
- 336 A 'Wills's Capstan' Sign
- 337 A Gilt Framed Print 'Ducks'
- 338 A Gilt Framed Print 'Pheasants'
- 339 Two Gray's Pottery Ashtrays Boxing  
Memorabilia
- 340 An Old Double School Desk
- 341 A Pair of Old Prints 'Seascape and  
Landscape'
- 342 Two 19th Century Staffordshire  
Figure Groups
- 343 A Nice Pair of Decorated and Hand  
Painted Vases
- 344 A Large Sylvac Dog
- 345 An Inlaid Mahogany Art Nouveau  
Display Cabinet
- 346 A Large Beswick Cat
- 347 A Royal Doulton Shire Horse
- 348 Three Pieces of Ruby Glass
- 349 A Five Piece Epergne Set, for repair
- 350 A Very Good 'Antique and  
Collectibles' Painted Milk Can
- 351 A Very Nice Wingbacked Parker Knoll  
Armchair
- 352 A Very Nice Wingbacked Parker Knoll  
Armchair
- 353 A Coloured Etching 'Donegal' - R  
Cresswell Boak
- 354 An Oil Painting 'The Old Homestead' -  
J M Stewart
- 355 A 1920's Oak Roll Top Desk
- 356 A Carved French Style Stool
- 357 An Encyclopedia of Antiques
- 358 A Watercolour 'Mournes From  
Hilltown' - James Brown
- 359 A Watercolour 'Riverscene' - F Wilson
- 360 A Watercolour 'Busy Harbour' - W  
McKibben
- 361 An Oil Painting 'Highland Cattle' -  
Prudence Turner
- 362 A Round Gilt Mirror
- 363 A Brass and Closoinne Four Glass  
Mantle Clock
- 364 A Brass and Glass Coffee Table
- 365 A Pair of Inlaid Tub Chairs
- 366 A Brass Fender and a Set of Fire  
Irons
- 367 A Very Nice Hand Painted and  
Decorated Two Handled Vase
- 368 A Very Nice Handpainted and  
Decorated Jug
- 369 Two Hummel Dishes and Five Geobel  
Birds
- 370 An Ebonised Chinese Stand
- 371 A Venetian Style Wall Mirror
- 372 A Leeds Pottery Creamware Large  
Kettle
- 373 A Suite of Silver Plated Cutlery, 135  
Pieces and Large Oval Silver Plate  
Tray and 12 Settings
- 374 An Oak Waterfall Magazine Rack
- 375 A Superb Pair of Queen Anne Style  
Large Walnut Armchairs
- 376 An Oil Painting 'Still Life' - Signed
- 377 A Victorian Hand Painted Planter
- 378 A Large Royal Doulton 'Juliet' Dinner  
Service
- 379 A Mahogany Canterbury
- 380 A Regency Style Sewing Table
- 381 A Nice Royal Winton Plate and a  
'Victoria' Sandwich Plate
- 382 A Nice Hand Painted and Decorated  
Sectional Serving Dish
- 383 A Mahogany Kidney Shaped  
Occasional Table
- 384 A Victorian Mahogany Cabriole  
Legged Stool
- 385 An Inlaid Mahogany Sutherland Table
- 386 A Very Nice Clarice Cliff 'Crocus'  
Bowl
- 387 Two Small Framed Oil Paintings
- 388 A Nice Parker Knoll Wingbacked  
Armchair
- 389 Four Nice Royal Worcester Cabinet  
Plates
- 390 A Nice Signed Snaffles Print' The  
Stone Facerder
- 391 A Watercolour 'Winter Ride' - George  
McCullough





346



347



350



351



355



361



359



362



363



365



375



377



379



380



383



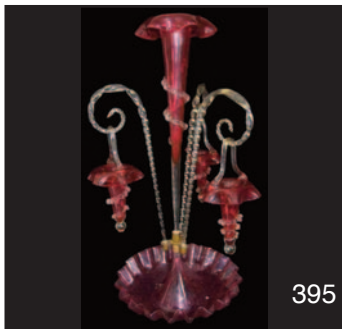
386



390



391



395

- 392 A Set of 3 Aynsley Plates 'Loch Lommand', 'Loch Tay' and 'Sterling Castle' - F Mickelwright, Welsh Artist
- 393 A Mahogany Occasional Table
- 394 An Oak Smokers Cabinet
- 395 A Large Ruby Epergne
- 396 A Nice Set of Three Beswick Birds in Flight
- 397 Two Nice Burleighware Jugs
- 398 A Nice Aynsley Handpainted and Decorated Shell Dish
- 399 Two Beswick Beatrix Potter Figurines, 'Timmy Tiptoes' and 'Mrs Tiggywinkle'
- 400 A Very Nice Circular Mahogany Dining Room Table
- 401 A Nice Set of Upholstered Chairs
- 402 A Very Nice Gilted Metal and Hand Painted Picture Frame
- 403 A Slope Front Coal Scuttle
- 404 A Very Nice Orka Vase
- 405 A Very Nice Pair of Hand Painted and Decorated Austrian Vases
- 406 A Gilted Cutlery Set, 8 Settings, 46 Pieces
- 407 A Walnut Tilt Top Table
- 408 An Edwardian Wingbacked Armchair
- 409 A Minature Wooden Wheel Barrow
- 410 A Four Section Dolls House and its Furniture
- 411 A Set of Four Military Prints
- 412 A Nice Pair of Bisque Figurines 'Lady and Gent'
- 413 A Pair of 19th Century Large Minton Majolica Lidded Jugs
- 414 A Large Bisque Figurine 'Lady and Gent'
- 415 A Large 19th Century Japanese Floor Standing Vase
- 416 Two Royal Doulton Character Jugs 'Admiral Montgomery' and 'Anne of Cleese'
- 417 A Rectangular Stool with Tapestry Seat
- 418 An Acrylic 'Taking a Breath' - Miles Gaythwaite
- 419 A Royal Doulton 'Rooster' Teapot
- 420 A Metal Rope Twist Four Tier Whatnot
- 421 A Large 20th Century Chinese Enamel Ginger Jar
- 422 A Large Bisque Figurine Group 'Boy and Girl'
- 423 Two Ruby Vases and Two Ruby Epergne Pieces
- 424 A Modern Corinthian Pillar Table Lamp and Shade
- 425 An Inlaid Mahogany Armchair and a Side Chair
- 426 A Victorian Brass Oil Lamp and Shade
- 427 Four Pieces of Leeds Creamware Pottery
- 428 A Large Modern Pottery Walrus, Tusks a/f
- 429 Two 20th Century Chinese Ginger Jars
- 430 A Painted Satinwood Bow Fronted Chest
- 431 A Royal Worcester Figurine 'My Favorite'
- 432 A Large Sylvac Squirrel Jug
- 433 A Glass Candlestand with Hurricane Shade
- 434 A Set of Six Waterford Crystal Liquer Glasses
- 435 An Antique Mahogany Desk / Cabinet
- 436 A Large Hand Painted Nautilus China Vase, Signed J Rodger
- 437 A Nice Pair of Hand Painted and Decorated Two Handled Vases
- 438 A Unusual Wade Jug and Another
- 439 A Lot of Antique Jugs and Teapots
- 440 A Large Sylvac Planter, Another and More
- 441 A Pierre Cardin Pen and Pencil Set
- 442 Five Nice Pieces of Aynsley
- 443 An Oil Lamp Base, Bowl, Shade etc
- 444 A Ruby Glass Oil Lamp Shade
- 445 An Amber Glass Oil Lamp Shade
- 446 A Ruby Glass Oil Lamp Shade
- 447 A Brass Helmet Coal Scuttle
- 448 A Teviotdale 'Fox Jumping a Wall'
- 449 A Border Fine Art Figurine 'Squirrel with Apple'
- 450 A Victorian Brass Door Knocker
- 451 A Georgian Walnut Tea Caddy
- 452 A Rare Provencal Silver Ladle Newcastle, 1819 John Walton
- 453 A Rare Early Irish Silver Snuff Spoon, Dublin Circa 1788, Benjamin Taitt
- 454 A Set of Six Irish Silver Spoons, Dublin 1812, John Power
- 455 A Cased Set of Dessert Forks and Knives, Silver Ferrules, Sheffield 1928
- 456 A Very Early Silver Marrowscoop, London 1794 T & W Chawner

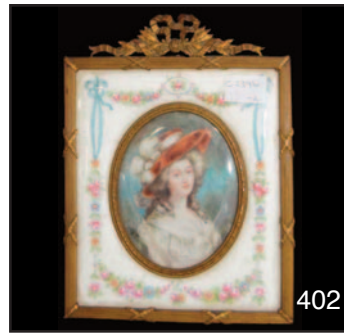




397



400



402



405



408



412



413



425



426



430



415



435



436



437



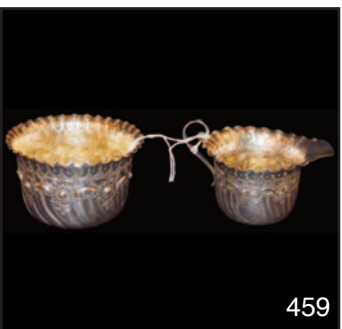
444



455



458



459



460



465



467



- 457 A Silver Alarm Clock, London 1994,  
Made by Harrods
- 458 A Silver Handled Magnifying Glass,  
London 1891
- 459 A Fine Pair of Irish Silver Cream and  
Sugar, Maker Gibson Belfast,  
Hallmarked Sheffield 1900/1902
- 460 A Superb Silver Dressing Table Set,  
Birmingham 1942
- 461 A Superb Large Scottish Silver  
Basting / Stuffing Spoon, Edinburgh  
1838, Marshall & Son
- 462 A Small Beaten Silver Pocket Mirror,  
Birmingham 1910
- 463 A Nice Silver Cigar Cutter,  
Birmingham 1977
- 464 A Silver Topped Jar, Birmingham  
1913 and a Nice Decorated Spoon
- 465 S Superb Heavy Scottish Silver Soup  
Ladle, Edinburgh 1810, Robert Grey
- 466 A Silver Pin Dish For Officers 2/25th  
Punjabis
- 467 A Very Good Irish Silver And  
Waterford Glass Decanter, Dublin  
1976, Royal Irish Silver Co.
- 468 A Set of Five Heavy Irish Silver  
Spoons, Dublin 1819, Samuel Neville
- 469 A Very Good Silver and Crocodile  
Skin Riding Crop, London 1927
- 470 A Magnificent Very Rare Provencal  
Silver Coffee Pot, Exeter 1855, James  
Williams
- 471 A Silver Vesta Box, London 1919
- 472 A Small Silver Perfume Bottle,  
London 1877
- 473 A Rare Very Heavy Silver Wine Label,  
'Madeira', London 1844, Charles  
Rawlins
- 474 A Very Heavy Silver Wine Label 'Port'  
Britannia Standard Silver Sheffield  
1967
- 475 A Very Rare Silver Wine Label 'Hock',  
London Circa 1790, Jonathan  
Bateman
- 476 A Silver Wine Label 'Scotch' London  
1977
- 477 A Silver Wine Label 'Whiskey'  
Sheffield 1943, Henry Atkins
- 478 An Irish Silver Ladle, Dublin 1816,  
Maker William Cummins
- 479 A Superb Pair of Very Heavy Irish  
Silver Forks, Dublin 1839, William  
Cummings
- 480 A Heavy Silver Dish, London 1820
- 481 A Nice Silver Dish, Birmingham 1984
- 482 A Large Silver and Cut Glass Perfume  
Bottle, Birmingham 1920
- 483 A Very Nice Large Silver Vinaigrette,  
Birmingham 1824, Thomas Shaw
- 484 A Superb Very Rare Vesta / Sovereign  
Case with Pencil & Toothpick,  
Chester 1900 William Neale
- 485 A Very Good Silver Card Case,  
Birmingham 1855 Nathaniel Mills
- 486 Eight Large Antique Silver Serving  
Spoons, London 1837, Fiddled and  
Thread Pattern
- 487 A Silver Jug, Birmingham 1936
- 488 A Good Silver Snuff Box, Birmingham  
1854
- 489 Misc Silver items to include Menu  
Holder Butter Knife etc
- 490 A Brass Carriage Clock
- 491 Two Sets of Cufflinks
- 492 A Silver Chain
- 493 A Silver Chain and Silver Pendant
- 494 A Superb Very Heavy Silver Chain
- 495 A Very Nice 18ct Gold Peridot and  
Diamond Ring
- 496 A 9ct White Gold Claddagh Ring
- 497 A Very Nice 9ct Gold Cameo Ring
- 498 A Victorian Silver Horseshoe / Riding  
Crop Brooch Set with Agates
- 499 A Magnificent 9ct Heavy Rose Fold  
Bangle Set with Amethysts
- 500 A Lovely 18ct Gold Yellow Sapphire  
and Diamond Ring
- 501 A Very Nice 9ct Gold Brooch
- 502 A 15ct Gold and Peridot Brooch
- 503 A Pair of 9ct Gold and Connemara  
Marble Cufflinks
- 504 A 9ct Rose Gold and Silver Diamond  
Ring
- 505 A Very Good Platinum Sapphire and  
Diamond Ring
- 506 A Silver Ring Set with Diamonds
- 507 A 9ct Gold Garnet Ring
- 508 A Pair of 9ct Gold on Silver Cufflinks
- 509 A Very Good 9ct Gold Sapphire and  
Diamond Cluster Ring
- 510 A Very Nice 18ct Gold Emerald and  
Diamond Cluster Ring
- 511 A Silver Ring Set with Rubies
- 512 A Very Good 9ct Gold Garnet Brooch
- 513 A 9ct Gold Diamond and Garnet Ring



470



472



473



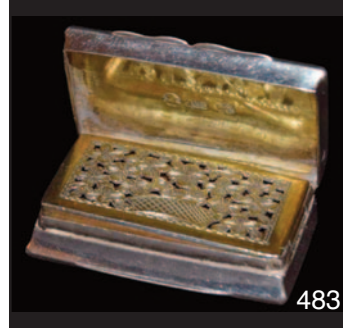
476



479



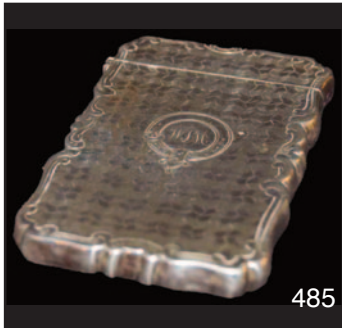
480



483



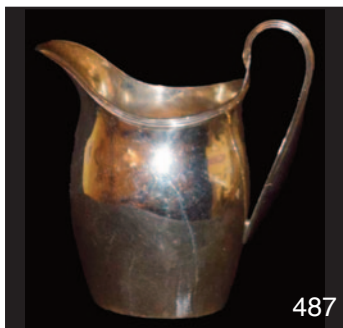
484



485



486



487



494



495



496



498



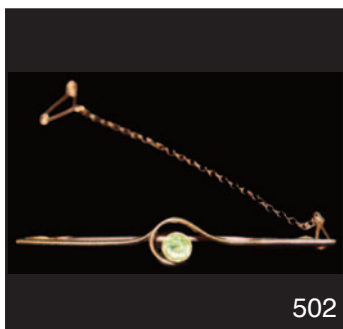
499



500



501



502



504



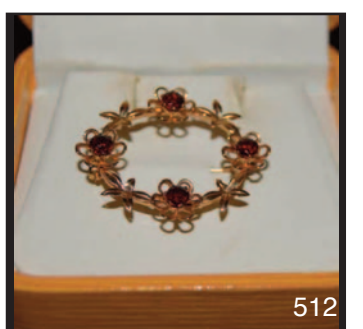
505



508



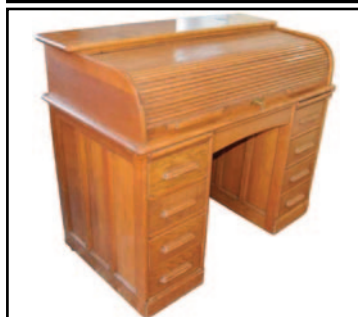
509



512



# mcafee



51 Main Street, Ballymoney, BT53 6AN, Tel: (028) 2766 7669